

CET442 Lab #6

Configuring a Web Site with IIS 5.0

1. In your DNS configuration, add a forward lookup zone for the domain your server will be hosting. In this zone, configure both forward and reverse (pointer) records for the domain name and hosts. **Use your own domain name instead of the example one given when doing the setups!**

In this **example**, we'll be configuring a domain called `fatboys.com`. There will be two forward records in the DNS, one for the root domain (`fatboys.com`) and the other for the web server (`www.fatboys.com`). Point both DNS records at the web server computer.

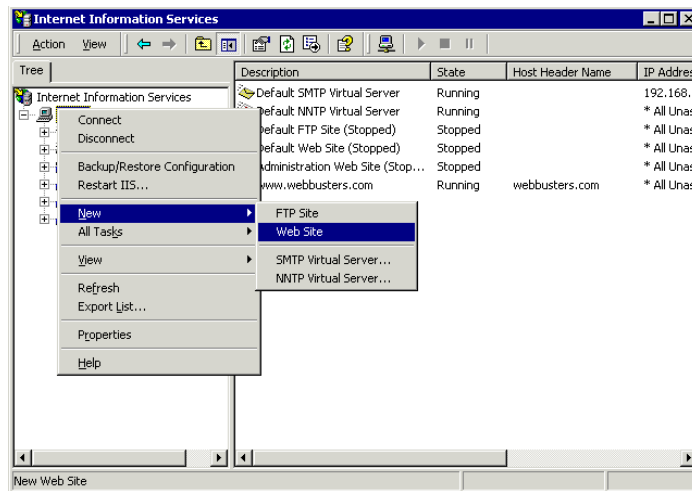
Note: You will get a warning when you enter a DNS record for “`fatboys.com`” (empty host name), but it actually works correctly!

To check this step, do a `nslookup` for both “`fatboys.com`” and “`www.fatboys.com`” using a workstation within your domain. The IP address of the web server computer should be returned in both cases.

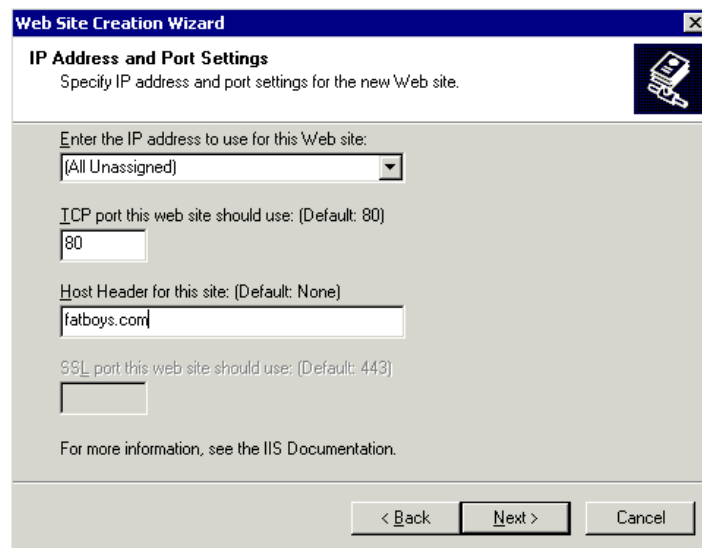
2. Build a folder with the files for the web site in a suitable area on the network. This folder should have a “`default.htm`” file within, which will be the default file the remote browser will get. A default file allows new users to navigate your site easily. You may use any tool desired to build this site.

After performing this step, you should be able to open the web site on the server computer by double-clicking the starting web page file. No other computers will be able to access this site at this point.

3. Start the Internet Services Manager (ISM) under *Administrative Tools*. Right-click on the server name and choose “New -> Web Site” from the pop-up menu.



4. The Web Site Creation Wizard will open. Click the NEXT button.
5. Under “Web Site Description” type the **domain name** of the site (fatboys.com) in this example and click NEXT.
6. Under “IP Address and Port Settings” make sure to set the site for access on port 80 (HTTP) and supply the **domain name** of the site again. Click NEXT.



The screenshot shows the 'Web Site Creation Wizard' dialog box, specifically the 'IP Address and Port Settings' step. The title bar reads 'Web Site Creation Wizard'. Below the title bar, the text says 'Specify IP address and port settings for the new Web site.' There are four input fields: 1. 'Enter the IP address to use for this Web site:' with a dropdown menu currently set to '(All Unassigned)'. 2. 'TCP port this web site should use: (Default: 80)' with a text box containing '80'. 3. 'Host Header for this site: (Default: None)' with a text box containing 'fatboys.com'. 4. 'SSL port this web site should use: (Default: 443)' with an empty text box. At the bottom, there are three buttons: '< Back', 'Next >', and 'Cancel'. A small icon of a floppy disk is visible in the top right corner of the dialog box.

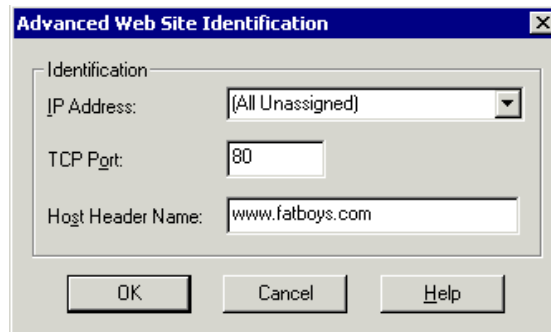
IIS 5 supports virtual hosts. You can host multiple sites with the same server computer at the same IP address (or addresses). When a web browser looks for a web page, it issues a GET command to the server with the full text of the page it is looking for. IIS 5 responds by fetching the file from the folder belonging to the appropriate domain as identified above.

7. Enter the path for the home directory to the site (this is the path to the folder you created in step 2.) Make sure the “Allow anonymous access to this web site” item is checked. Click NEXT.
8. Leave the ACCESS PERMISSIONS as is; this way, the home directory of the site can provide read access to files placed there, and can also host active server pages (ASPs). Click NEXT to finish the wizard. If everything is OK, you should now see the site in the Internet Services Manager window.
9. You should now be able to access “yourdomain” from a browser on any workstation in your domain.

If you can't access the site, try restarting IIS. ***It is generally a wise idea to restart IIS whenever you make changes to site configurations.*** Also make sure that you have a web site home page called “default.htm” on your site.

10. One thing you'll notice is that the URL "www.yourdomain" does *not* work at this point. The reason for this is that although DNS certainly points correctly to the web server computer, IIS doesn't know how to respond to a GET request with this string within. This should be fixed as follows:

- a) Right click on the "yourdomain" web site in the left-hand pane and choose "Properties..." to bring up the properties dialog.
- b) Click on the "Web Site" tab. To the right of "IP Address", click the "Advanced..." button.
- c) The "Advanced Multiple Web Site Configuration" dialog will appear. Click "Add" under "Multiple Identities for this Web Site"
- d) In the dialog that appears, enter port 80 and the site alias ("www.fatboys.com" in this example) so that IIS will recognize the alias for the site. Click OK.



The same site should now appear regardless of whether "www" is contained as a prefix for the URL.

Virtual hosts and sites is an extremely powerful tool. Note that you can have IIS require a different port number than 80 for site access. This can be used to prevent the average user from "stumbling" onto a site (though it will not secure the site from more sophisticated intrusion methods.)